

# Content Center for Side-by-Side Installations of Inventor & User Library Migration

This document describes how to install Autodesk Inventor 2011 (AI2011) side-by-side with Autodesk Inventor 2010 (AI2010). This setup allows designers to work on different releases with access to independent content libraries.

In AI2011, you can choose between two solutions:

- Local content, designed for stand-alone users - Inventor Desktop Content.
- Server based, for work in a shared environment - Autodesk Vault Server, known in the past as Autodesk Data Management Server (ADMS).

## Stand-alone User Environment

If you are a stand-alone user, use Inventor Desktop Content for working with Content Center.

---

**NOTE** You can install Desktop Content on your local machine next to AI2011 and/ or AI2010 without requiring changes of the previous AI versions.

---

## Install AI2011 and Inventor Desktop Content libraries

Install Autodesk Inventor on the local computer. On the Autodesk Inventor media:

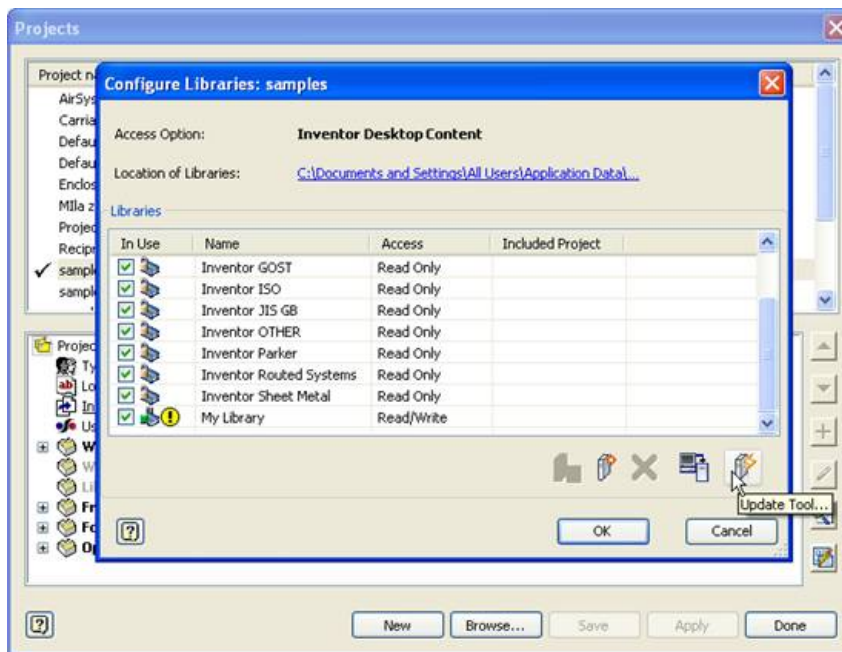
- In Select Products to install, select Content Center Libraries.
- In the Review - Configure - Install dialog box, click Configure.
- In the Select Content Center Access Options dialog box, select Inventor Desktop Content.
- On the Content Center libraries tab, select the Content Center libraries to install.

## Migrate AI2010 Content Center libraries in Desktop Content

At the first launch of AI2011, Content Center searches for user libraries from AI2010. If they are found, you are prompted to transfer the libraries to Desktop Content.

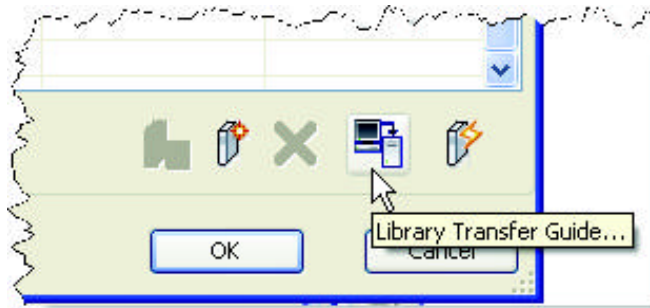
Depending on the size and number of libraries, transfer can take a considerable amount of time.

To make transferred libraries available to Content Center, first migrate them by running the Update Tool available in the Configure Libraries dialog box. Migrate any legacy Desktop Content user libraries from AI2010 to make them usable in AI2011. First copy them into an AI2011 Desktop Content library, and then run the Update Tool to migrate them.



You can transfer libraries at the first launch of AI2011, or you can transfer the user libraries from the Vault Server at any time later:

- 1 Open Configure libraries dialog box from the Project editor
- 2 Click Library Transfer Guide...



- 3 Select option "From Autodesk Vault Server to Inventor Desktop Content."
- 4 Enter the Vault Server log-in information (the default values are User: "Administrator", blank password, Server: "localhost", Database: "Vault").
- 5 Select libraries to transfer.

---

**NOTE** Autodesk Vault Server is necessary for the library transfer. If you remove the Vault Server, you cannot transfer libraries from the Server to Desktop Content.

---

### Shared Environment

If you work in a shared content environment, use Autodesk Vault Server as the data storage technology for Content Center libraries.

To run AI2011 side-by-side with AI2010, you can keep AI2010 working with the corresponding Vault Server version. Install Autodesk Vault Server 2011 on a different machine.

You can have only one version of Vault Server installation, which supports AI2011 next to AI2010. Uninstall the previous version of Vault Server. Then install Autodesk Vault Server 2011, and Autodesk Inventor 2010 Client Update for Vault Server 2011.

The following sections describe how to install AI2011 next to AI2010, accessing Autodesk Vault Server 2011. The setup procedure involves the following tasks:

- Remove the latest version of the Autodesk® data management server software.
- Install Autodesk Vault Server 2011 software
- Migrate AI2010 Content Center libraries to Autodesk Vault Server 2011.
- Install AI2011
- Manage independent data libraries for AI2011 and AI2010 in the Autodesk Vault server 2011 console.

## Content Center Libraries on Autodesk Vault Server 2011

The Content Center uses the Autodesk Vault Server as the data storage technology for shared standard content.

If AI2011 and AI2010 software is set up to access standard content on Vault Server, then they must access the same Autodesk Vault server. It must be the latest version of Vault server to support the latest version of Inventor. Remove the old Autodesk data management server from the system. Then update AI2010 to support the new Autodesk Vault Server 2011 functionality so you can use that software. For the removal and update, apply the **Autodesk Inventor 2010 Client Update for Autodesk Vault Server 2011** patch manually. Then re-establish the connection to the new Autodesk Vault server. The new version of the Autodesk Vault server can manage Content Center libraries for AI2011 and AI2010. Each Content Center Library on Vault server contains an attribute "Library partition." The library partition states the Inventor version for which the library can be used.

## Install Autodesk Vault Server 2011

Install the Vault Server and Content Center libraries from the Autodesk Vault 2011 (Server) media.

---

**NOTE** You are not required to uninstall a previous version of the Vault Server (Autodesk Data Management Server) before you install the new Vault Server 2011. If Autodesk Vault Server 2011 installation detects a previous version, it is uninstalled upon your agreement during the 2011 server installation.

---

For installation details, refer to the Autodesk Vault 2011 Implementation Guide located on the Documentation page on the Autodesk Vault Server media.

## Migrate AI2010 Content Center libraries

At the end of the Autodesk Vault Server 2011 installation, you are prompted to start the server console and migrate the previous version of the server database (Vault databases and Content Center libraries). Depending on the

size and number of databases, migration can take a considerable amount of time. You are not required to migrate at the end of the installation. However, you can access Content Center libraries on the server from Inventor only after you migrate them. You can migrate the previous version of the database the first time you launch the server console.

For important information about migrating CC libraries, see the following section, “Library Migration”.

### **Install AI2011**

Install Autodesk Inventor on the local computers. On the Autodesk Inventor media:

**Important:** Do not install Content Center Libraries for Desktop Content. The format of the libraries is different for the shared (Vault server) and single (Desktop Content). The Desktop Content libraries are not compatible in a shared environment.

- 1 In the Select Products to be installed dialog box, clear the selection for Content Center Libraries.
- 2 In the Review - Configure - Install dialog box, click Configure.
- 3 In the Select Content Center Access Options dialog box, select Autodesk Vault Server.

### **Autodesk Inventor Client Update for Autodesk Vault Server 2011**

Download the AI2010 Client Update for Autodesk Vault Server 2011 manually from <http://www.autodesk.com/inventor-updates-servicepacks>.

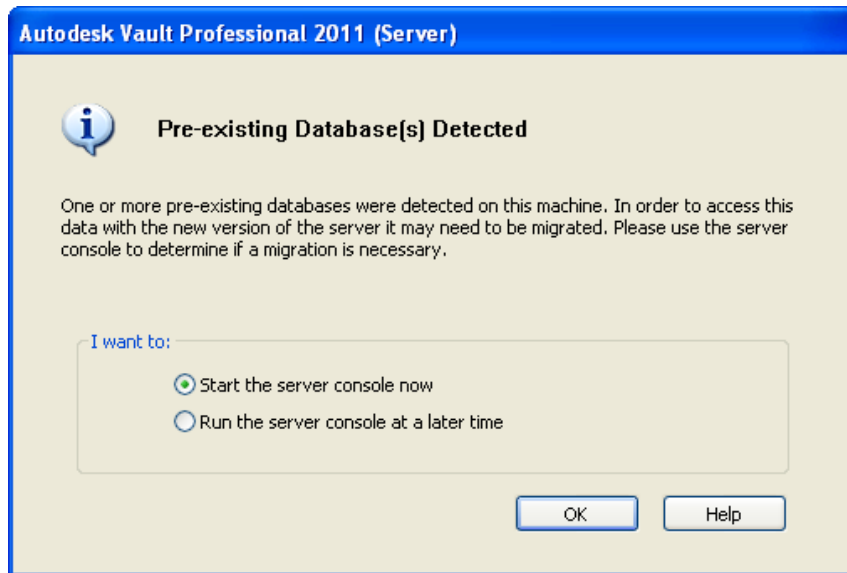
A particular version of Inventor Client Update for the Autodesk data management server is released for each Inventor version and each Service Pack (SP). For example, AI2010 SP1 installs the Client Update for Autodesk Vault Server 2011 on top of AI2010 + SP1.

The Inventor Client Update for the Autodesk Vault Server affects files in your Autodesk Vault client. It also affects common files shared by your Content Center and Vault clients. Thus, when you choose to install the Inventor Client Update for the Autodesk Vault Server, your Autodesk Vault client software also updates.

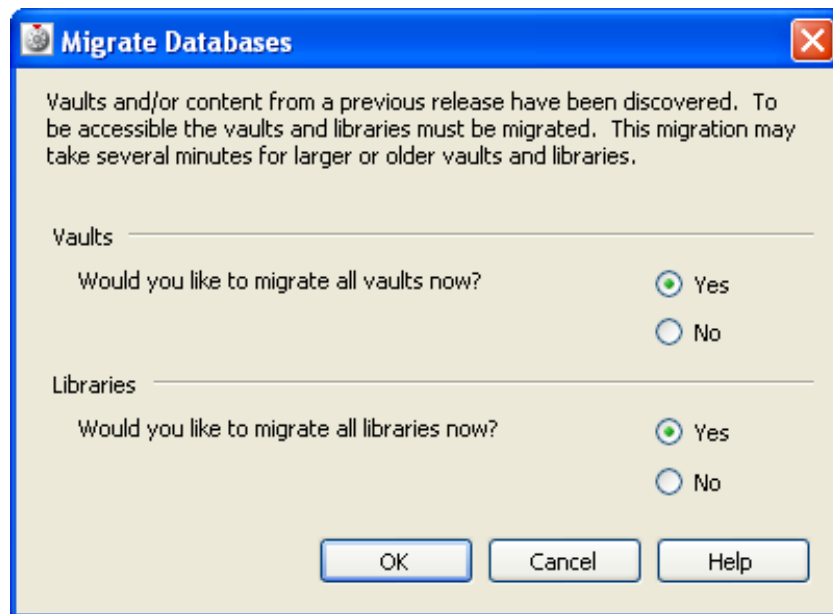
### **Library Migration**

At the end of the Autodesk Vault Server 2011 installation, you are prompted to start the Autodesk data management server console (Figure 3). The default

value for the prompt is now. It launches the server console when installation of the Vault server is completed.



The first time the Autodesk data management server console starts, it looks for existing databases for migration. The server database, with all the AI2010 and user Content Center libraries, is located and submitted for migration. This dialog box displays.



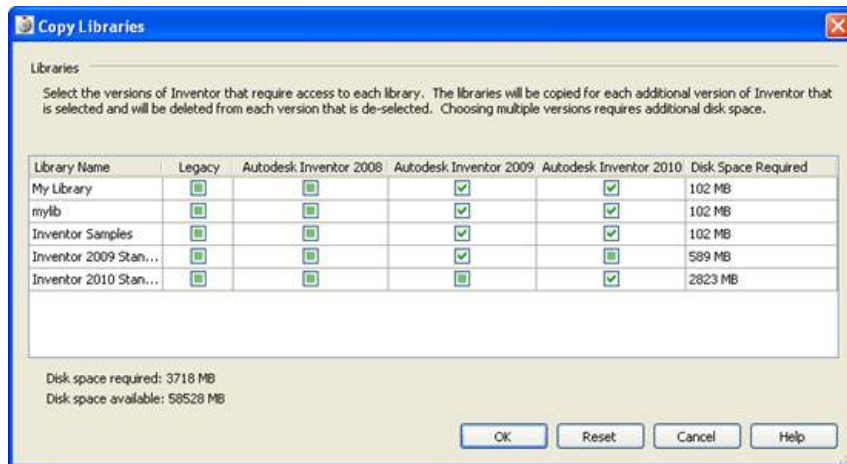
For both Vaults and Libraries, select Yes to migrate them into the new Autodesk Vault Server database schema. A Vault database contains user profiles and other information important for Content Center. Therefore, migrate the Vault database, even if you do not use Vault.

Migrated AI2010 Content Center libraries remain accessible by their respective Inventor versions. You can copy any AI2010 user libraries to the AI2011 partition for use with AI2011. In the Copy Libraries dialog box, you select libraries to copy to a higher partition. Then they are accessible by higher Inventor versions. By default, all user libraries are copied to the AI2010 partition.

---

**NOTE** To access non migrated vaults and libraries, first migrate them to the new version of the server. You can migrate non migrated databases manually at a later time.

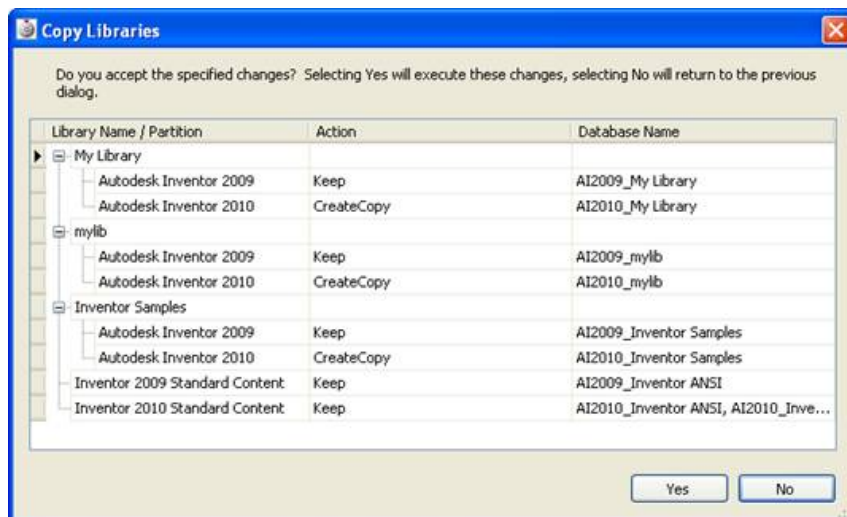
---



If a library check box is selected, the library remains available for the Inventor version and/or a new copy is created for the higher Inventor version.

If a library check box is not selected, the library is removed for the Inventor version and/or a copy is not created for the higher Inventor version.

You can review your selections in the Copy Libraries dialog box before you execute the specified changes.



Click Yes to begin execution. Click No to return to the previous dialog box.



After the migration and Copy Libraries is complete, Content Center libraries are shown in the server console. AI2010 standard content libraries and user libraries retain the library names represented in the Autodesk Vault Manager on previous versions of Autodesk data management server. Each of them is shown in the "Autodesk Inventor 2010" partition on the right side of the Autodesk Server Console dialog box.

Copies of AI2010 user libraries created for AI2011, are available with a prefix "AI2011\_" added to their name. They are located in the "Autodesk Inventor 2011" partition. Additionally, all newly installed Inventor 2011 standard content libraries contain the "AI2011\_" prefix in their library names .

